



VIDEO MANAGEMENT SYSTEM



www.idcubesystems.com

aperture



OPEN-PLATFORM VIDEO MANAGEMENT SYSTEM

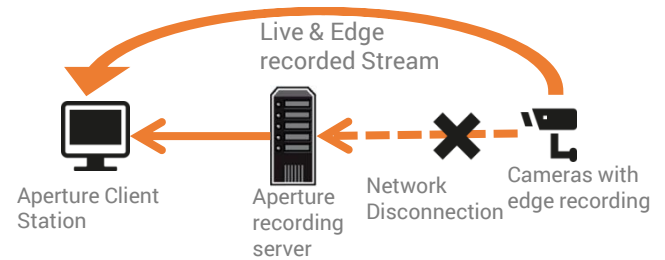
KEYPOINTS

- Open architecture video management software with full range of editions, sufficing all needs & budgets of residential users to large enterprises to city surveillance
- Accepts MJPEG, MPEG4, H.264, H.265 as well as Full HD and megapixel video streams from IP cameras & encoders
- Build hybrid scalable solutions from a single NVR to multiple servers handling thousands of cameras
- Accepts Video Streams from 4000+ camera models from 90+ manufacturers
- 32 & 64 bit versions
- Seamlessly integrates with IDCUBE Access 360 access management applications; Full featured API/SDK as well as simplified HTTP API for integration with third party applications
- Built-in Face Recognition, License plate Recognition (LPR/ANPR) and Advance Video Content Analytics (VCA) modules
- User specific custom layouts & sequencing; 2 way audio support; Book Marking & Water Marking; PTZ control
- CPU consumption optimization for client applications (using GPU resources)
- Automatic Server & Camera discovery
- Multilingual support
- Supported OS: Microsoft Windows 2008/2012/Windows 7/8.1/10

aperture

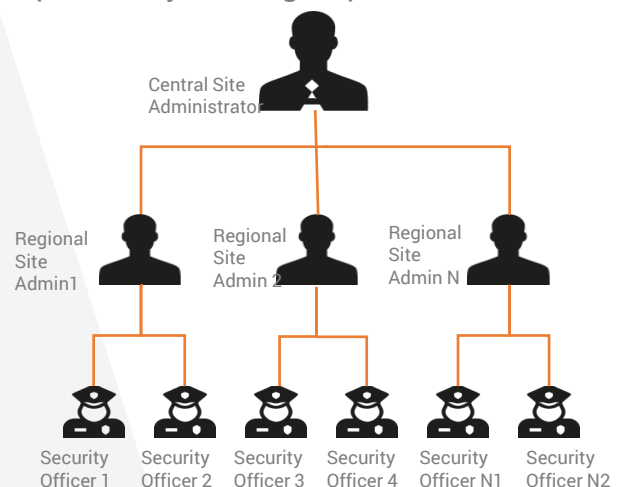
EDGE RECORDING

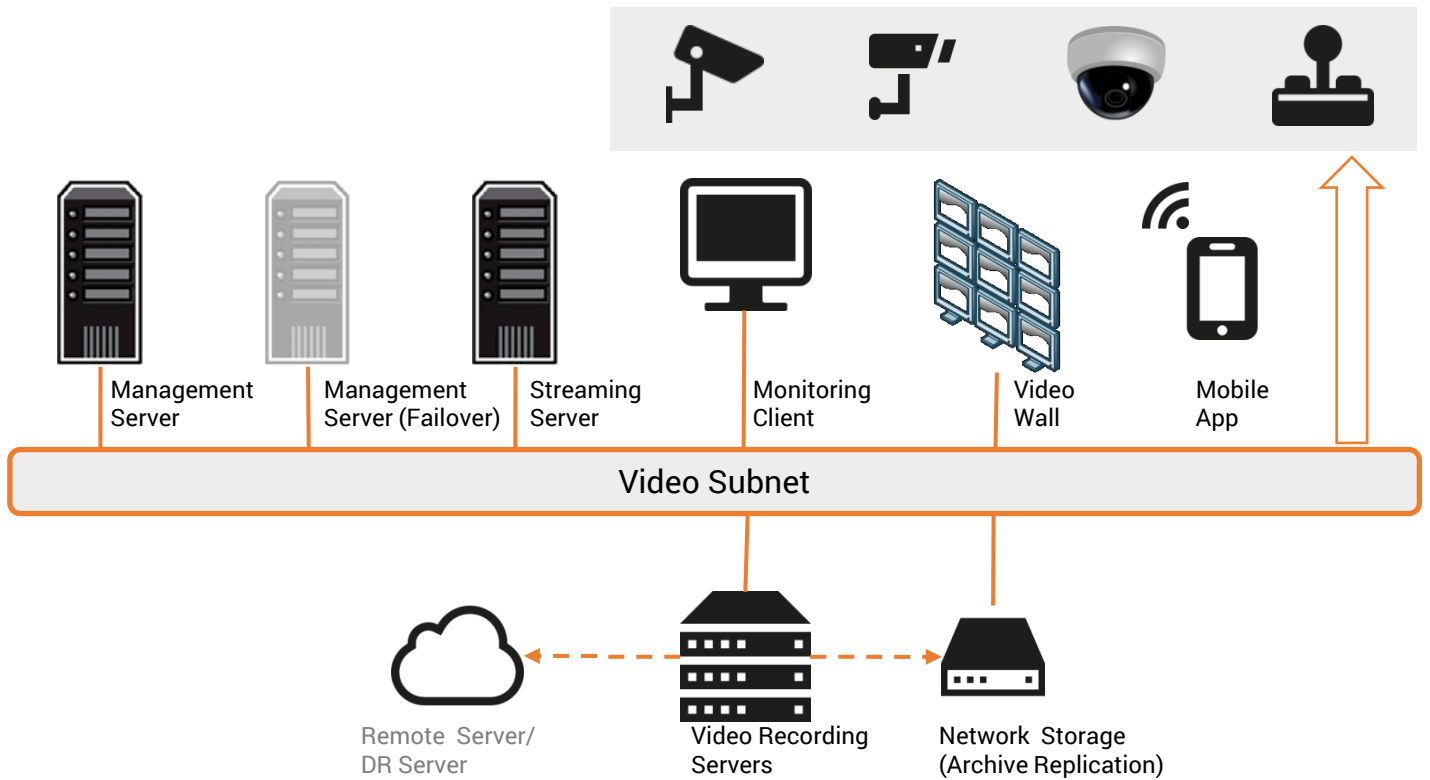
- Allows uninterrupted data recording & viewing, even on network disconnection with the Aperture recording server. The edge recorded data automatically transfers to the server as soon as the network connection re-establishes with the camera



ORGANIZATION HIERARCHY

- Facilitates the construction of a structured system rights and privileges for the users within an organization. For e.g. a group's administrator has the right to access only those set of cameras and servers that has been allocated specifically to the group



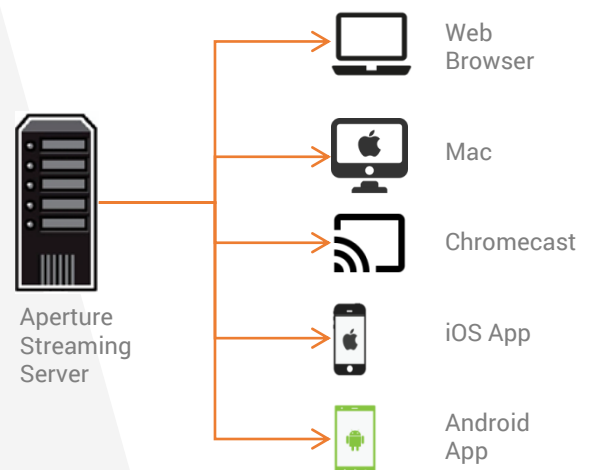


VIDEO WALL

- Convenient management of monitoring cameras in big installations with large number of displays
- Unlimited number of video walls without any additional license
- Upto 100 physical displays per wall with upto 20 row/column
- Send individual channels to the video wall using Aperture Monitoring Application
- Throw individual Video Channels to a video wall either automatically via 'Event-&Action manager' configuration or using 'User Buttons'
- Vital for operating large-scale video surveillance systems, especially in critical infrastructures

STREAMING SERVER

- Access live streams and archive videos from anywhere via web-browser and/or native mobile applications
- Some of the major features exposed on the Streaming server are: live view, archive playback, Pan-Tilt Zoom control, two way audio;
- Automatic video stream optimization based on bandwidth availability & device viewing capability



WATCHDOG

- Detects and rectifies certain type of application failures by automatically restarting the VMS services and/or server machine, if so required
- Periodically restarts as per maintenance schedule

AD&LDAP

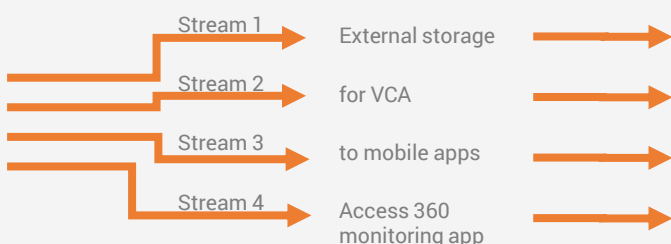
- Support for Active Directory groups
- Export of users from Active Directory
- Automatic synchronization for newly created and deleted users

ADVANCE HEALTH MONITORING

- Real-time monitoring for servers, devices, channels, user sessions, video walls and external services (LPR, FR) etc.
- Status of Connectivity, failover and video streams

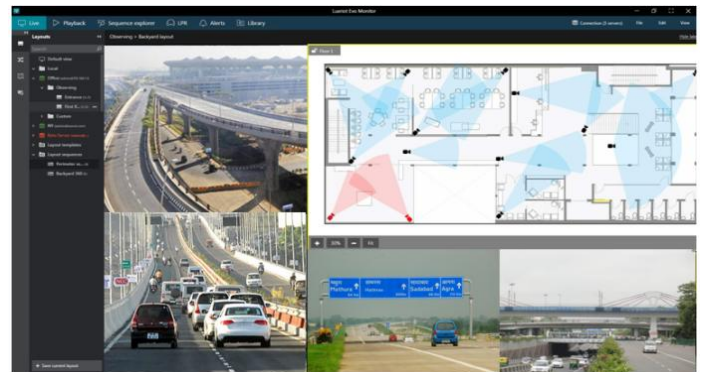
MULTICAST&SUBSTREAM CONTROL

- Transmit data to multiple destination devices (from both servers and cameras)
- Each stream can be individually assigned and optimized for various applications such as external storage, Video Content Analytics, Mobile, Thin Client etc.



INTERACTIVE MAPS

- Provides a hawk eye view for all the cameras installed in a facility
- Integrate alerts on a Map
- Custom Map designer
- Supports Google maps
- Drag & drop devices, user buttons and links to other maps for easy navigation



USER BUTTON

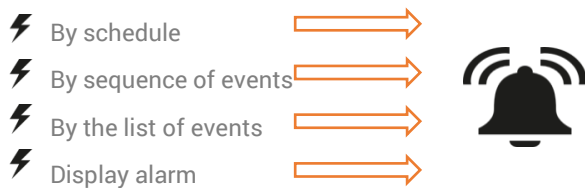
- User buttons are used to manually trigger events. The event can be a door open or door lock command, activation of recording profiles, activation of fire evacuation procedure, notification etc.

RECORDING OPTIONS

- Recording of video, audio & digital input event stream
- Pre and post recording for Event/Alarm
- Automatic triggering of unlimited recording profiles for wide range of events
- Scheduled recording
- Set duration & storage quota

ADVANCE EVENT AND ACTION MANAGER

- Configure how software reacts to any event caught on a camera
- Enables a user to send an alert to an operator to bring focus towards the camera that requires immediate action
- Facilitates the operator to handle not only the single event but a set of sequence of events simultaneously. The feature can thus help to get rid of false alarm
- Schedules, timers and conditions can be applied in the Event & Action manager window for user button related events

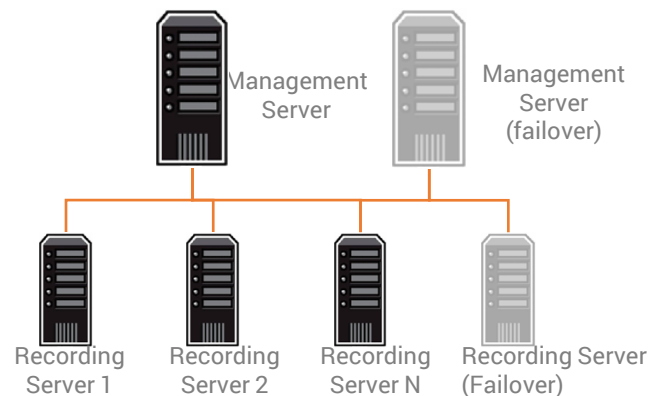


APERTURE CLIENT

- Multiple servers connects to a single Aperture monitor for viewing
- Dual-Streaming support with automatic switching mode for optimal resource & bandwidth usage
- Supports default set of commands for keyboards and DCZ keyboards
- Custom command mapping with keyboard & joystick
- Smart search by motion region
- Two-way audio support
- Supports one or multiple viewports
- Footage sequencing by splitting the video for specified time & corresponding video clips

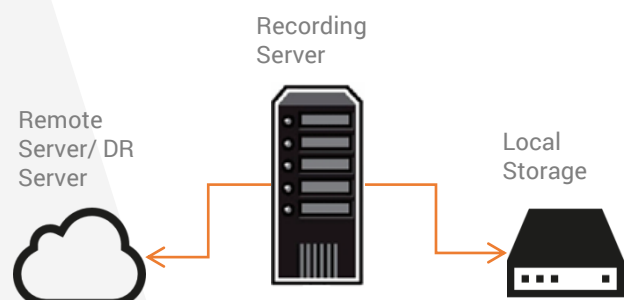
CENTRAL MANAGEMENT SERVER

- Aperture VMS provides ability to interface many recording servers (unlimited) under centralized management
- Configure failover for recording servers (1-to-many or many-to-1) as well as for central management server
- Automatic & manual failover (for maintenance procedures) modes
- Configure unlimited number of failover cluster nodes



ARCHIVE REPLICATION

- Enables a user to make a local recording server as a buffer server
- Facilitates continuous data transfer from local data center to central data center
- Ensures availability of critical recordings at the time of an incident



APERTURE PRODUCT MATRIX

FEATURE	APERTURE NANO	APERTURE MICRO	APERTURE MACRO
Architecture	Client-Server	Client-Server	Central Mgmt Server
Client/Remote Connections	Limited	Unlimited	Unlimited
User Configuration	Local	Local	Central
OS Support	32 Bit	64 Bit	64 Bit
Supported resolutions	Full HD	Unlimited	Unlimited
Web Access	0	0	0
Mobile Applications	0	0	0
Video Content Analytics	0	0	0
License Plate Recognition	0	0	0
Watch Dog	0	0	0
Scheduled Recording	0	0	0
Event & Action Manager	Basic	Advance	Advance
E-map	0	0	0
H.265	-	0	0
Interactive Map	-	0	0
GPU Utilization	-	0	0
User Specific Layouts	-	0	0
Device Grouping	-	0	0
Streaming Control	-	-	0
User Button	-	-	0
Active Directory & LDAP	-	0	0
Multi cast	Camera only	Camera & Server	Camera & Server
Failover	-	-	0
N+1 Redundancy	-	-	0
Archive replication	-	-	0
Video Wall Application	-	-	0
Health Monitoring	-	-	0
Organization Hierarchy	-	-	0
Edge Recording	-	0	0
Water Marking	0	0	0
Book Marking	-	0	0



IDCUBE is uniquely positioned as a comprehensive physical security solution provider via its Access360 software suite for organizations of all sizes. The Access360 platform helps in managing personnel access, vehicle access, attendance, visitors, contractors, cafeteria usage, asset tracking, video management, video content analytics, LPR/NPR and more.

We are trusted by large businesses and SMEs across industries. We work with some of the most acclaimed global system integrators and solution providers. IDCUBE's distributor and channel partner network now has over 300 active businesses and this number is growing because of the opportunities our partners see in working with us.



INDIA

Corporate Office

B-19, Sector-2,
Noida- 201301
(U.P.) INDIA
Tel. : +91-120-4130715

Delhi

A-18, Kotla Village
Extension,
Delhi-110091
INDIA

Bengaluru

#20, 1st floor, 3rd Cross,
Malleshwaram,
Bangalore-560003,
Karnataka, INDIA
Tel.:+91-80-23564241/42

UAE

IDCUBE - FZE

Techno Hub 1 – Office G 042,
Dubai Silicon Oasis,
Dubai, UAE
Tel. : +971-508606619