



**IDCUBE**

**Data Center** 

Unveiling advanced measures to  
protect your data center  
infrastructure

UAE



Data centers grapple with complexities in physical identity management, insider threats, and compliance issues. Incident response times are often insufficient.

**Access360 revolutionizes data center security, employing AI-ML for proactive insider threat detection, addressing breaches, and plugging vulnerabilities. Its eco-friendly digital credentials minimize physical touchpoints, offering a modernized approach to resilient and efficient access management.**



# BENEFITS



## Stakeholder Trust

Clients, investors, and other stakeholders trust organizations prioritizing green energy and privacy, fostering stronger relationships



## Elevate Security

Shift from reactive to proactive and preventive with advanced AI analytics and comprehensive end-to-end encryption measures



## Brand Enhancement

Enhance your organization's brand perception with a secure, welcoming environment, automated processes, and eco-conscious initiatives



## Boost Productivity

With automation and integration, reduce your users' onboarding time from 2 weeks to 2 minutes



## Green Initiative

Promote sustainability, reduce energy consumption, and meet environmental standards for a future-forward Data Center



## Cost Savings

Reduce your access control operations cost by 80% with mobile credentials and the cloud platform

# FEATURES



## Sustainable Practices

Reduce carbon footprints and enhance sustainability by deploying virtual credentials, paperless visitor flow, cloud hosting, and AI analytics.

## AI Sentinel

Employ AI for risk management, anomaly detection & insider threat prevention. Optimize space utilization and reduce energy costs with occupancy heat maps.

## High Availability

Access360 ensures uninterrupted system availability with redundant servers and independent controllers boasting a 300-year MTBF for reliable, robust performance.

## Multifactor Authentication

Enable multifactor authentication with a combination of physical, biological, and virtual identities.

## Identity Matrix

Streamline user roles with our PACS, managing relationships and access of employees, contractors, and visitors.

## Safety First

Effective emergency response with single-click lockdown, evacuation modes, and real-time headcount.



## Fort Knox Security

Ensure data security compliance with ISO 27001 & 27018, SOC2, GDPR, PCI-DSS, HIPAA, and NIST-SP 800-53.

## Integration Powerhouse

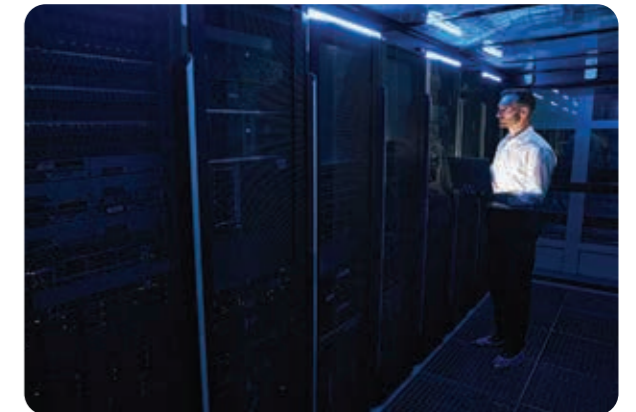
Seamlessly integrate with HRMS, ERPs, and SSO systems for synchronized data, streamlined onboarding, and organizational efficiency.

## Critical Area Control

Safeguard the data center core by requiring multiple authorized users to be present simultaneously, utilizing multi-man rule and occupancy control to deter insider threats.

## Time & Attendance

Ensure precise time-tracking for modern hybrid workspaces, covering all five work scenarios with geo-fencing and tagging.



## Smooth and Secure Vehicle Access

Simplify vehicle access management with UHF, active RFID key fobs, mobile credentials, and ANPR for smooth authorized entry and exit.

## Streamlined Visitor Management

Pre-register visitors and issue QR e-passes with multi-level approvals and 10 unique visitor stories.

## We built the World's first AI-powered operating system for physical Access Control — **Access360**.

The OS provides comprehensive support for a wide range of physical identities, encompassing legacy credentials like smartcards and biometrics, as well as virtual ones such as mobile credentials and QR codes. This enables secure and agile authentication of diverse entities across various facilities.

**5000+**

Facilities secured

**14+**

Global fortune  
500 customers

**210+**

Metro rail stations

**35+**

Airports

**25+**

Countries served

**150K+**

End devices

**UAE**

**IDCUBE FZE**

Techno Hub 1 – Office G 042 Dubai Silicon Oasis Dubai

Phone: +971 4 388 7900

Contact us at [contact@idcubesystems.com](mailto:contact@idcubesystems.com)

Visit us at <https://www.idcubesystems.com/mea/en/>

Scan to explore our  
solution portfolio

